

EZ-SCSI® DELUXE EDITION

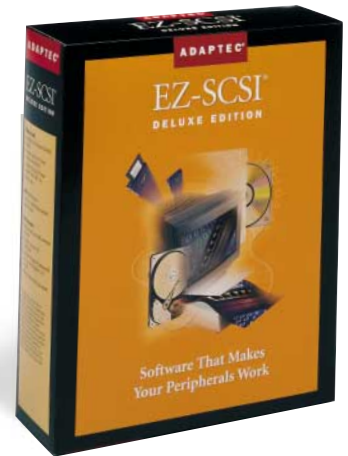
Software That Makes Your Peripherals Work!

Product Benefits

- Report SCSI diagnostic and configuration data for easily identifying common system problems.
- Update your system with the latest Windows 95 and Windows NT 4.0 drivers for enhanced Adaptec SCSI card performance.
- Master and copy CDs to a CD-Recordable drive.
- Save and restore data quickly.
- Automate routine chores—like backing up files or running virus software.

Manage your peripherals more easily than ever before!

EZ-SCSI Deluxe Edition is a robust new utility for controlling all your SCSI peripherals. It includes the latest Windows® 95 and Windows NT® 4.0 drivers, and downloads future updates of your SCSI drivers and software automatically from the web. Use it to install removable drives and configure Adaptec® SCSI cards. You can even restore hard disks with just a few clicks. Make your SCSI peripherals work harder—with ensured peak performance and optimal operation.



Install

Helps you install, format and partition removable drives and hard disks.

Update

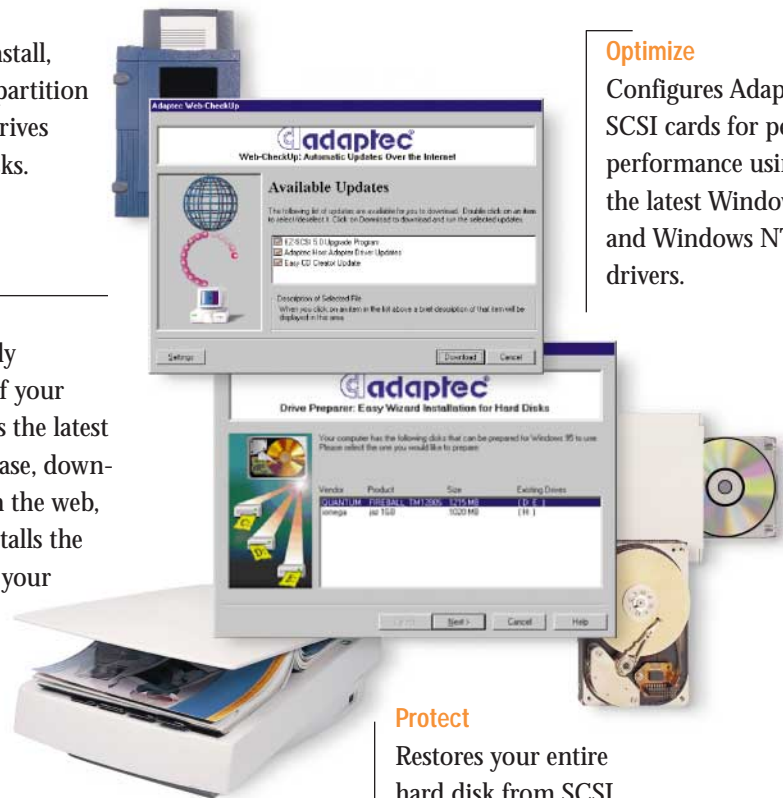
Automatically determines if your system needs the latest Adaptec release, downloads it from the web, and then installs the new files on your system.

Optimize

Configures Adaptec SCSI cards for peak performance using the latest Windows 95 and Windows NT 4.0 drivers.

Protect

Restores your entire hard disk from SCSI tape, removable drives or another hard disk in one quick step, or creates a backup just as easily.



*SCSI stands for Small Computer System Interface and is pronounced "scuzzy".

Adaptec, Inc.
691 South Milpitas Boulevard
Milpitas, California 95035
Tel: (408) 945-8600
Fax: (408) 262-2533

Adaptec Europe - Belgium
Tel: (32) 2-352-34-11
Fax: (32) 2-352-34-00

Adaptec Japan - Tokyo
Tel: (81) 3-5365-6700
Fax: (81) 3-5365-6950

Adaptec Singapore
Tel: (65) 278-7300
Fax: (65) 273-0163

Literature:
1-800-804-8886 (USA and Canada)
or (408) 957-7274

Pre-Sales Support:
1-800-442-7274 (USA and Canada)
or (408) 957-7274

Fax:
(408) 957-7132

World Wide Web:
<http://www.adaptec.com>
Internet ftp server: <ftp.adaptec.com>
Adaptec USA Bulletin Board
Service (BBS): (408) 945-7727
(up to 28,800 baud, using 8 bits,
1 stop bit, no parity)

Interactive Fax: (303) 684-3400



Copyright © 1998 Adaptec, Inc. All rights reserved. Adaptec, the Adaptec logo, the BandWidth by Adaptec logo, the Adaptec tagline, EZ-SCSI, EZ-DRIVELIGHT, Web-CheckUp, Disk ImageSaver, Drive Preparer, SCSIExplorer, Easy CD Creator, SCSI Interrogator, SCSI Tutor and SCSI Bench are trademarks of Adaptec, Inc. which may be registered in some jurisdictions. Microsoft, Windows, Windows 95, and Windows NT are registered trademarks of Microsoft Corporation used under license. Photo CD is a trademark of Kodak used by Adaptec, Inc. under license. All other trademarks used are owned by their respective owners.

Information supplied by Adaptec, Inc. is believed to be accurate and reliable at the time of printing, but Adaptec, Inc. assumes no responsibility for any errors that may appear in this document. Adaptec, Inc. reserves the right, without notice, to make changes in product design or specifications. Information is subject to change without notice.

More Product Benefits

5 new applications, including:

- **Disk ImageSaver™** The fastest, easiest way to restore SCSI hard disks.
- **Adaptec Scheduler** Automates routine chores—like backing up files, or running your virus software.
- **Web-CheckUp™** Automatically updates your system with the latest SCSI drivers and software.
- **Drive Preparer™** Easily installs removable drives and hard disks.
- **Easy CD Creator™ Lite** Copy information to any CD-Recordable drive with drag and drop ease.

What You Need

- IBM-compatible with 486 processor or better
- CD-ROM drive and 3.5" floppy drive
- Microsoft® Windows 95, or Windows NT 3.5.1 or later
- ASPI-compliant SCSI host adapter

Package size: 10"H x 8.125"W x 2.5"D
Weight: 1 lb.
UPC: 7 60884 13132 9

Package Includes	Win95/ WinNT	Win 3.1x	DOS
Disk ImageSaver	●		
Adaptec Backup	● †		
Web-CheckUp	●		
Drive Preparer	● †		
Easy CD Creator Lite	●		
Adaptec Scheduler	●		
SCSI Interrogator™	●	●	
EZ-DRIVELIGHT™	●	●	
SCSI Tutor™	●	●	
SCSIBench™/32	●	●	
Power Management	●	●	
Read/Write Cache Utility	●		
QuickScan	●	●	
Photo CD Viewer	●	●	
CD Player	●	●	●
Disk Partitioner/SCSIFMT		●	●
DOS Lock/Eject			●

THIS PRODUCT OR SOFTWARE MAY BE DESIGNED TO ASSIST YOU IN REPRODUCING MATERIALS IN WHICH YOU OWN THE COPYRIGHT OR HAVE OBTAINED PERMISSION TO COPY FROM THE COPYRIGHT OWNER. UNLESS YOU OWN THE COPYRIGHT OR HAVE PERMISSION TO COPY FROM THE COPYRIGHT OWNER, YOU MAY BE VIOLATING COPYRIGHT LAW AND BE SUBJECT TO PAYMENT OF DAMAGES OR OTHER REMEDIES. IF YOU ARE UNCERTAIN ABOUT YOUR RIGHTS YOU SHOULD CONTACT YOUR LEGAL ADVISOR.

† - Windows 95 only

